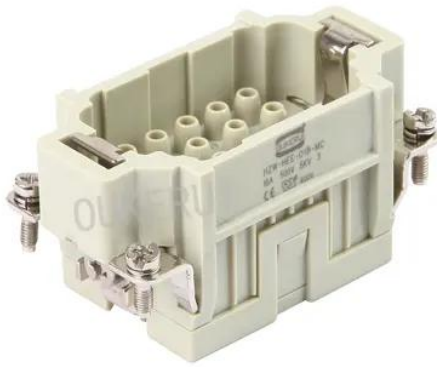




EE 18 Pin Heavy Duty Connector Male Insert

OUKERUI is a professional manufacturer and supplier of EE 18 Pin Heavy Duty Connector Male Insert in China. If you are looking for the best EE 18 Pin Heavy Duty Connector Male Insert at a low price, please feel free to contact us! Please feel free to contact us. We look forward to becoming your long-term partner in China with competitive price and reliable delivery service.



Product Description

As a professional manufacturer We are happy to provide EE 18 Pin Heavy Duty Connector Male Insert for you. We will give you the best after-sale service and fast delivery. They are available in a variety of designs, including even the most special applications. Inserts are designed for demanding environments or applications where high vibration can cause standard housings and connectors to fail. This makes them extremely durable and reliable in all environments.

Product Description

EE 18 Pin Heavy Duty Connector Male Insert is a Heavy Duty Connector manufacturer with TUV audit. We also have CE, UL, EAC certified high performance connectors. ISO quality management system. Patent configuration, easy installation, quick installation. Personalized interfaces for different scenarios. High quality raw material guarantee. Create more environmentally friendly products.

Basic Info.

Model NO.	HZW-HEE-018MC
Contacts Surface Treatment	Silver/Glod Plated
Housing Material	Die-Casting Aluminum Alloy
Working Environments	IP65 for Various Harsh Environments
Contact Cost	Pay Additional Cost for Crimp Contacts
Specification	CE, UL, ROHS



Origin	China
Production Capacity	3000pieces Per Day
Certification	UL
Contact Material	Copper
Housing Coating	Anti-Corrosion Powder Spray
Crimp Tooling	Available
Transport Package	Poly bag and Double Cartons
Trademark	Oukerui
HS Code	8536900000

SPECIFICATION

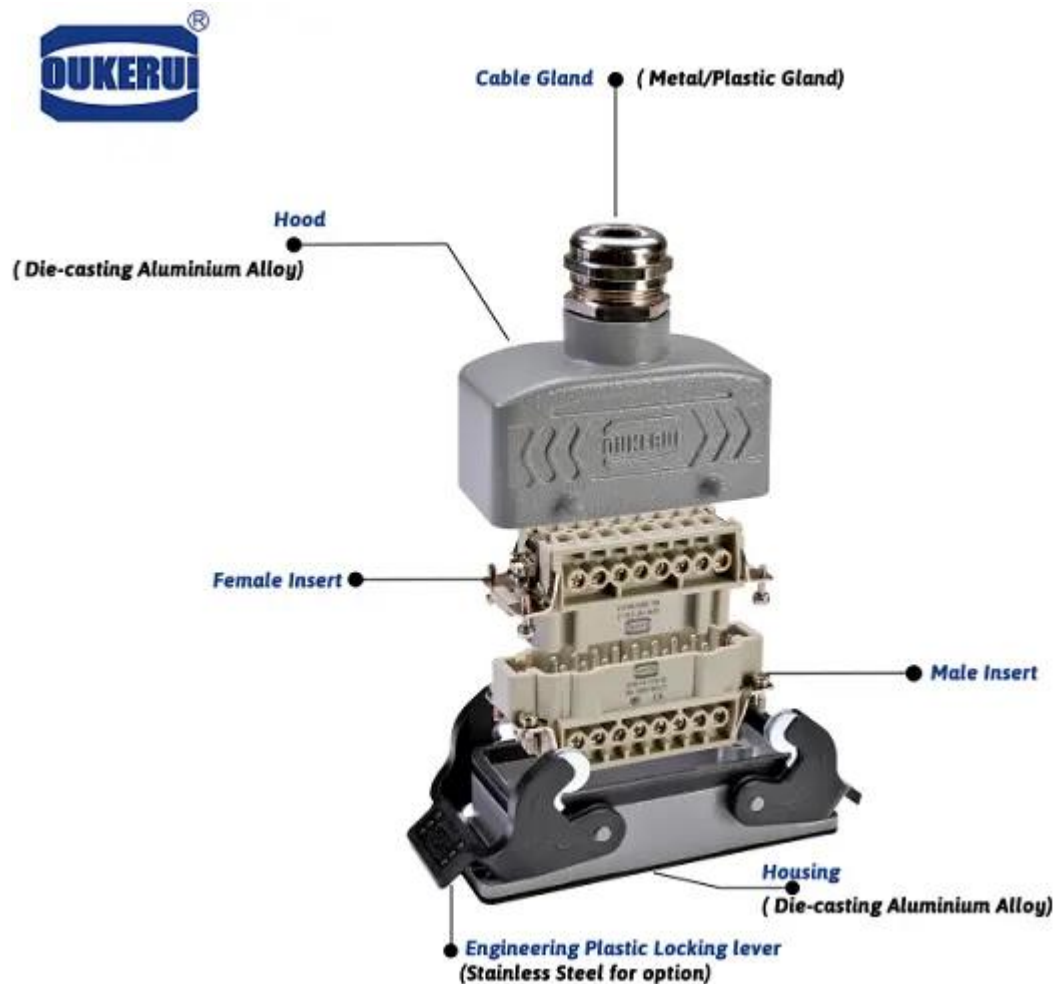
Model No.	HZW-HEE-018MC
Terminal type	Crimp Terminal
Housings material	Dia casting aluminum alloy
Working Voltage	500V
Rated Impulse Voltage	6KV
International protection(IP) grade	IP65
Flammability	V0
Mechanical Life Span	Min 500 times
Warranty	1 Year
Gender type	Male
Contacts' surface processing	Silver or Gold Plated
Mounting type	Bulkhead/Surface/ cable to cable
Insert Block	Top grade PC
Working Current	16A
Temperature Bearing Range	-40° C~+125° C
Pollution Degree	3
Transport packing	Carton



SPECIFICATION OF CONTACT

Material	Copper Alloy
Terminal	Screw/Crimp Terminal
Surface Treatment	Silver/Gold Plated
Wire Gauge	0.14-4.0mm ² (AWG26-14)
Stripping length	7.5mm

EE 18 Pin Heavy Duty Connector Male Insert are extensively used in equipment that require electrical and signal connections, such as mold machinery, construction machinery, textile machinery, transportation technology, electric energy, electric locomotives and so on various need electrical and petrochemical equipment.





www.oukeruiconnector.com

上壳
Hoods



母插体
Female insert

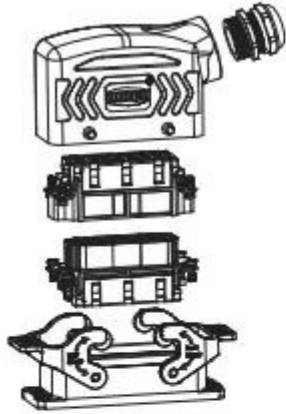


公插体
Male insert

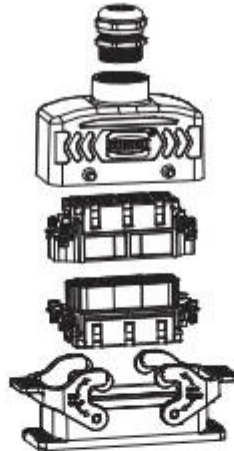


下壳
Housings

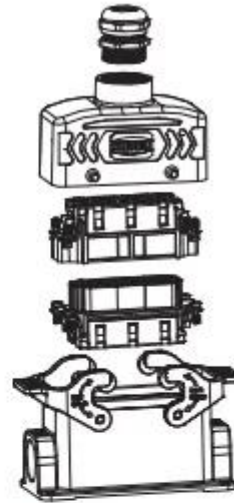




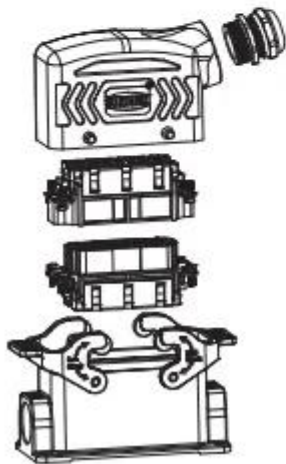
● 开孔安装/Bulkhead mounting
侧面进线/Side entry



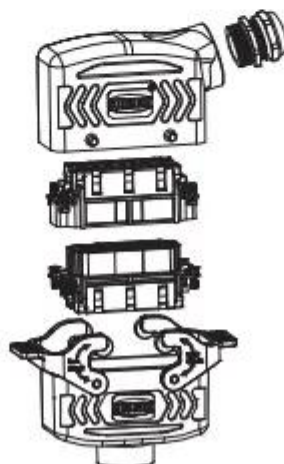
● 开孔安装/Bulkhead mounting
顶部进线/Top entry



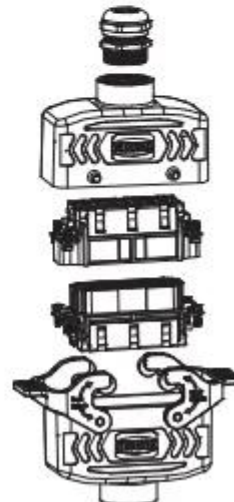
● 表面安装/Surface mounting
顶部进线/Top entry



● 表面安装/Surface mounting
侧面进线/Side entry



● 电缆对接/Cable to Cable
侧面进线/Side entry



● 电缆对接/Cable to Cable
顶部进线/Top entry